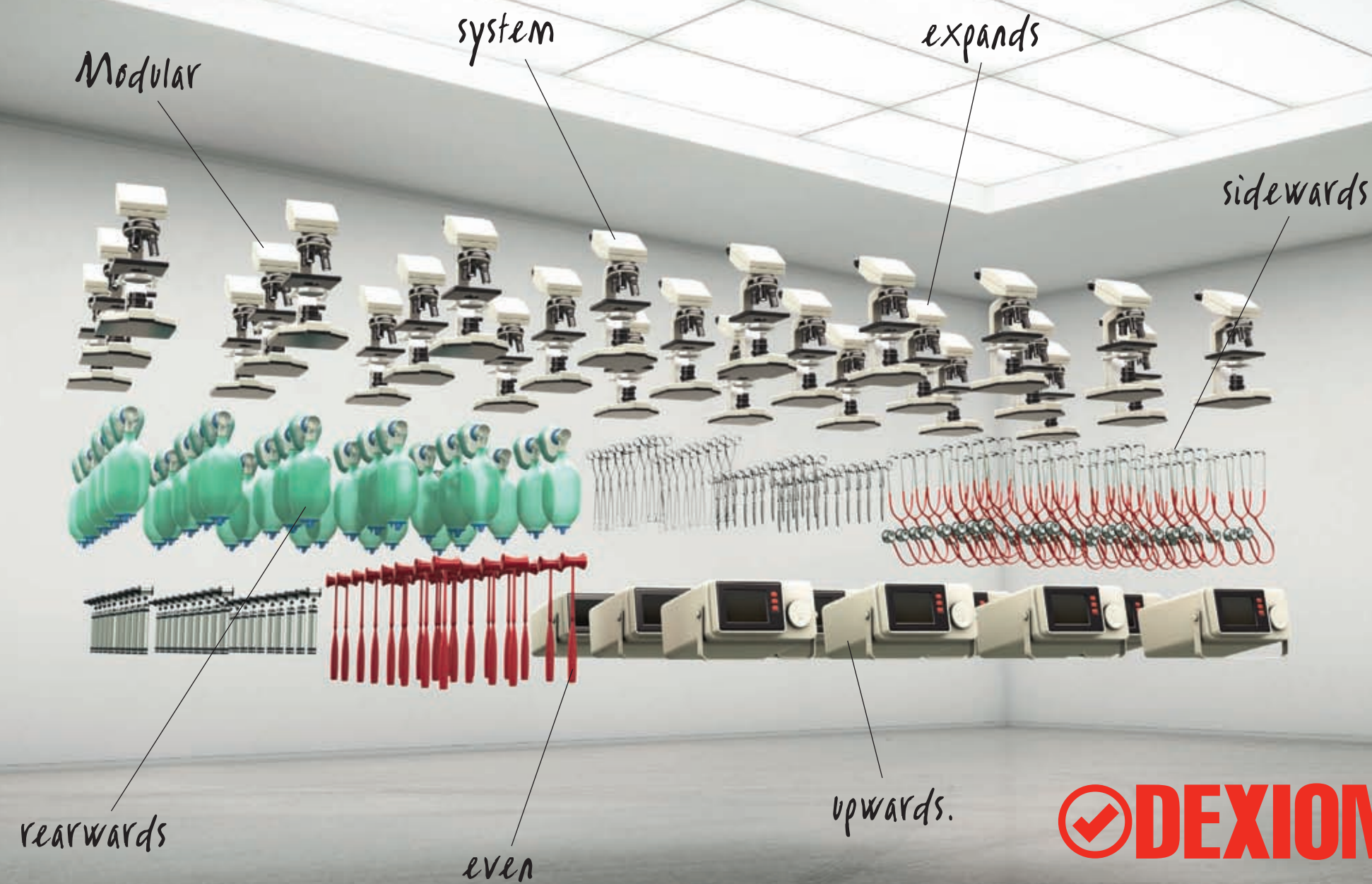




Dexion (Australia) Pty Limited. ABN 83 000 083 956. Head Office: 23 Tattersall Road, Kings Park NSW 2148. [dexion.com.au](http://dexion.com.au)  
Dexion New Zealand. Incorp No. 1856839. Head Office: 423 East Tamaki Road, East Tamaki, Auckland 2013. [dexion.co.nz](http://dexion.co.nz)

Whilst the utmost care is taken to ensure the accuracy of the information contained herein, it is provided in the understanding that the company shall under no circumstances be liable for any injuries, expenses or other losses which may in any way be attributable to the use or adoption of such data and/or design details. All dimensions indicated are nominal only. Dexion reserves the right to alter or amend without prior notice data and design details specified herein. Product specifications may vary between regions. Re-Order Code M084. F+S+A/DEX0049



Ultima CI-80  
Ultima CI-180





*Side by side etc etc.*

# Ultima CI-80.

## **You need:**

**A single-tier, hand-storage system for small parts of light to medium weight. Your business is growing and evolving, so you need a solution that can change with you.**

## **Our solution:**

**Employing a modular system, Ultima CI-80 expands in any direction. A common frame panel makes sideways extension simple while units are made mobile with Compactus® bases and runners. A wide range of accessories such as mesh backs and lockable swing doors allow you to switch between front office and backroom applications.**

## **The vital statistics:**

**Shelf carrying capacity**\_\_\_\_up to 240kg UDL

**Shelving bay carrying capacity**\_\_\_\_up to 1035kg

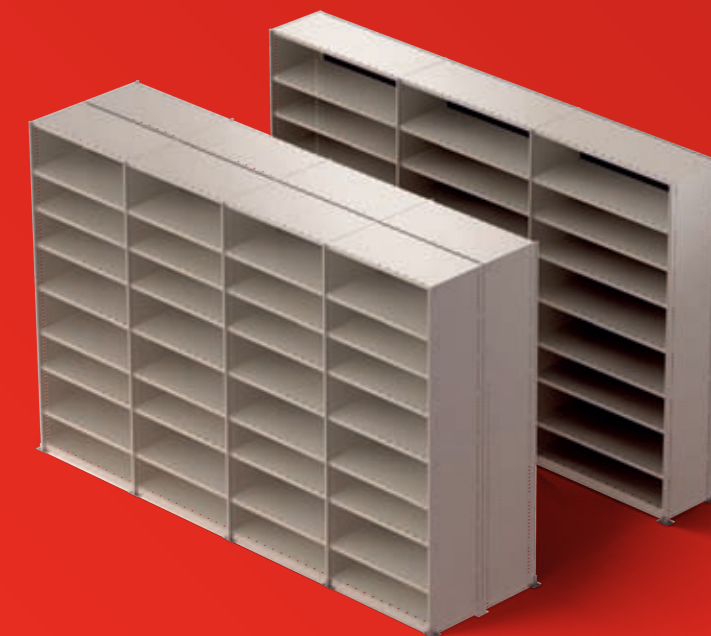
**Shelving bay lengths**\_\_\_\_up to 1200mm

**Shelving bay clear depths**\_\_\_\_standard up to 600mm  
made to order up to 800mm

**Shelving bay heights**\_\_\_\_up to 2400mm

**Shelf height**\_\_\_\_30mm

**Shelf pitch**\_\_\_\_25mm







*Extend  
your  
shelf  
life.*

# Ultima CI-180.

## **You need:**

To make the best possible use of floor space and overhead room. You're thinking two-tier or high rise solutions. The items you store are small in size and light to medium weight.

## **Our solution:**

This system combines the versatility of the modular CI-80 (see previous page) with a range of new components to create either a walkway or a platform two-tier solution or extended upward for high rise storage. Like CI-80, this system simply bolts and clicks together to produce original storage solutions. Accessories like staircases, pallet gates and steel grate floors combine to maximise floor space and utilise vacant headroom.

## **The vital statistics:**

Shelf carrying capacity\_\_\_\_up to 240kg UDL

Shelving bay carrying capacity\_\_\_\_up to 1035kg

Shelving bay lengths\_\_\_\_up to 1200mm

Shelving bay clear depths\_\_\_\_up to 600mm

Shelving bay heights\_\_\_\_up to 2400mm

Shelf height\_\_\_\_30mm

Shelf pitch\_\_\_\_25mm







Well stacked  
shelves.



Shelf stiffeners  
increase shelf load  
carrying capacity.  
Additional shelf clip  
option for bays  
>600mm provides  
added strength.



Mesh back.



Back bracing.



Base plates distribute  
load and protect floor  
coverings.



Bin fronts/back stops.



Display shelf and  
magnetic labels.



Coat rail.





*Mobility  
offers  
flexibility.*

Stacks more.



Slotted shelf allows for shelf dividers.



Suspended filing rack simply clips to the shelf and promotes longer lateral file life.



Create pigeon holes with binning dividers.



Suspended divider.



Dividing bars.

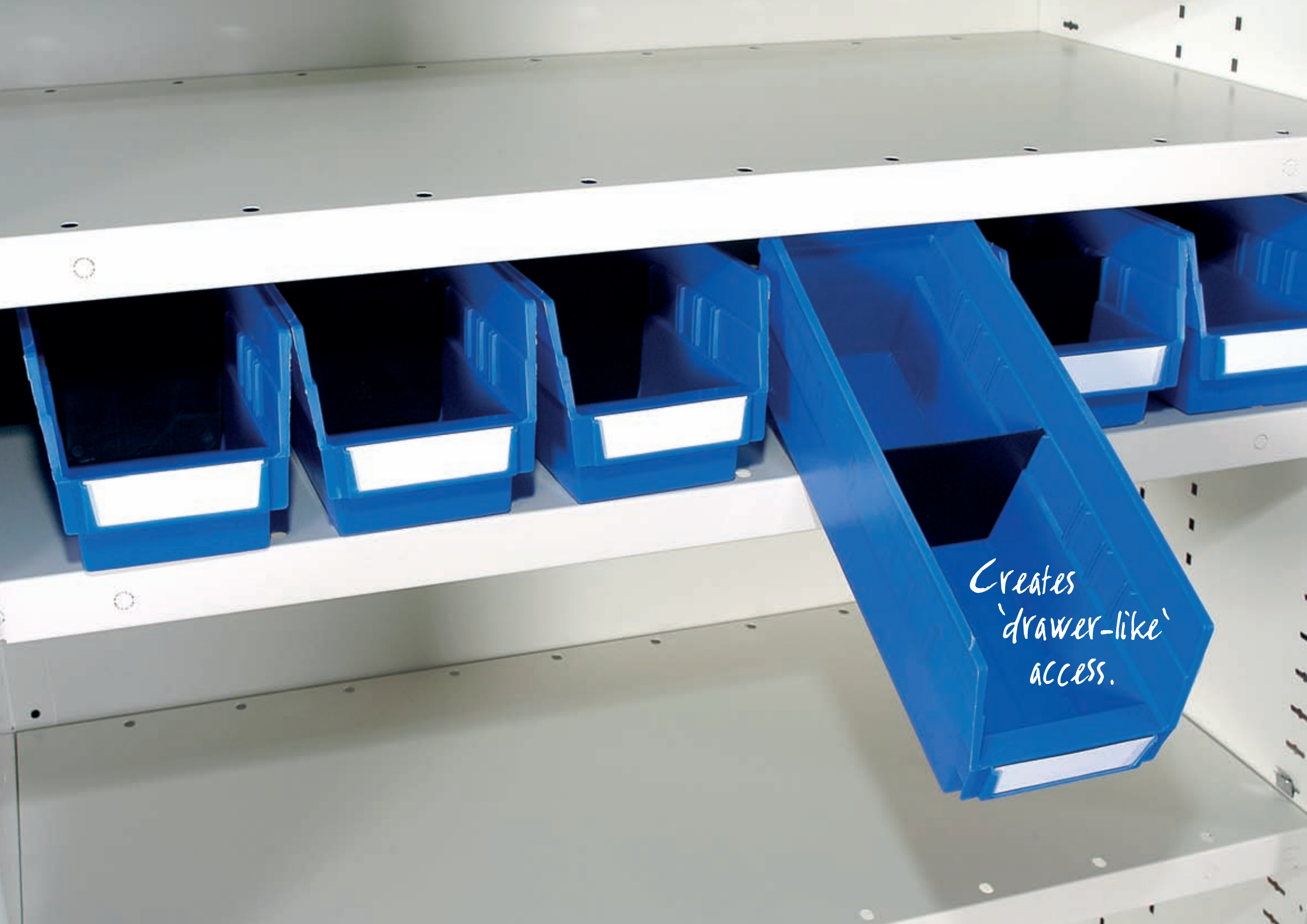


Label holders.



Suspension filing drawer is designed to suit drop-in suspension files.





*Creates  
'drawer-like'  
access.*

## Accessories.



**Multimedia drawer.**



**Incorporate louvred panels and hook style maxi-bins for a total solution.**



**Incorporate Dexion-BAC drawer units for small parts storage.**

## Specifications.

### Ultima CI-80 & CI-180

Specifications	Dimensions
Shelf carrying capacity	Up to 240kg UDL
Shelving bay carrying capacity	Up to 1035kg. Reinforced frames up to 1700kg - made to order
Shelving bay lengths	750mm, 900mm, 1050mm, 1200mm
Shelving bay clear depths	300mm, 400mm, 450mm, 500mm, 600mm. Other depths 250mm - 800mm - made to order
Shelving bay heights	975mm, 1875mm, 2175mm, 2400mm
Shelf heights	30mm
Shelf pitch	25mm
Colour	Stone white. Others - made to order